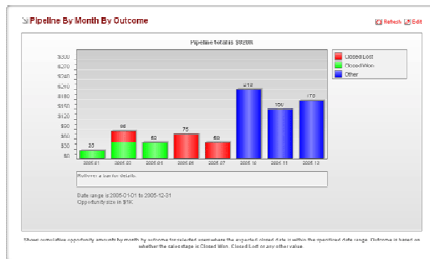




# Mobile Edge for SugarCRM



## Your Wireless Connector to Your SugarCRM



### Mobile Edge for SugarCRM is an easy and rapid way for you to get real-time access to your SugarCRM information on your RIM BlackBerry devices.

Mobile Edge for SugarCRM is a cost-effective open standards application based on Web Services. Pre-built, it quickly connects and extends your mission-critical enterprise data housed in SugarCRM to the BlackBerry, while offering users remarkable flexibility and ease of use.

MobileEdge for SugarCRM was created and is deployed by iEnterprises, Inc., a SugarCRM certified partner, and is available for download on SugarExchange ([www.sugarexchange.com](http://www.sugarexchange.com))

#### What Mobile Edge for SugarCRM Can Do for You

Mobile Edge for SugarCRM lets you quickly access, evaluate and deploy a wireless CRM solution designed especially for SugarCRM products (SugarCRM Professional or SugarCRM Enterprise) onto your BlackBerry—

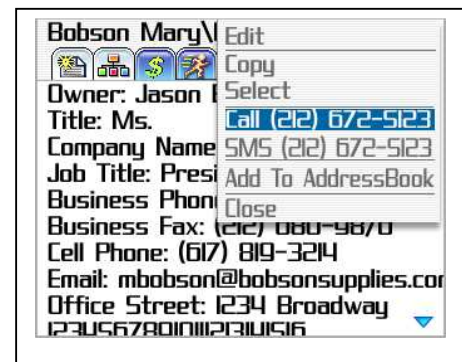
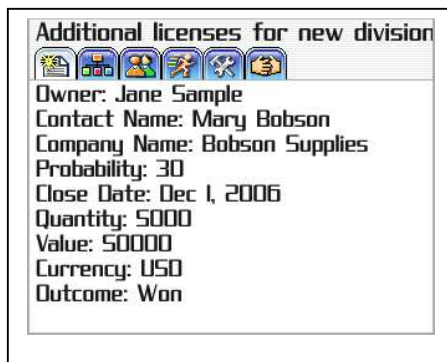
iEnterprises Inc.  
172 South Street,  
Murray Hill  
New Jersey  
07974-1946  
USA  
Telephone: +1 908 679 0000  
Fax: +1 908 864 8971  
email: [info@ienterprises.com](mailto:info@ienterprises.com)  
[www.ienterprises.com](http://www.ienterprises.com)

iEnterprises Europe Limited  
K2, Deseronto Business Park  
Deseronto Business Park  
St Mary's Road  
Langley SL3 7EW  
UK  
Telephone: +44 (0)1753 478 300  
Fax: +44 (0)1753 732 500  
email: [info@ienterprises.eu](mailto:info@ienterprises.eu)  
[www.ienterprises.eu](http://www.ienterprises.eu)

without having to tap into precious time and resources. We've done the work for you through one configurable application, allowing you to unite your SugarCRM and wireless investments in days--- not months.

You gain the look and feel and security features found in your SugarCRM as well as the BlackBerry device. Accessing and updating pipelines and contacts, and logging call reports happen in seconds, anytime, anywhere with Mobile Edge for SugarCRM.

## Sample Screen Shots



### Key User Benefits

#### 1) You Control How You Want Your Sugar CRM Wirelessly Deployed

Just as you can choose Sugar On-Demand for hosted, Sugar Cube for plug-and-play CRM inside your firewall, or Sugar On-Site if you want to manage Sugar premise, you can conveniently choose how you want to wirelessly deploy Mobile Edge for SugarCRM. Whichever deployment option you choose, you'll find Mobile Edge for SugarCRM wireless deployment and management hassle-free. You also get personalized care by a team of wireless CRM experts -- you're not "just a number."

#### 2) Your "Real-time" Mobile CRM for SugarCRM

Mobile Edge for SugarCRM enables you to instantly access mission critical data anytime, anywhere, giving you immediate wireless access to your SugarCRM when you're away from the office. Mobile Edge for SugarCRM

retains the data integrity of your SugarCRM system. Your mobile professionals gain peace of mind and extra productivity wherever they may be.

### **3) User-Friendly and Configurable**

MobileEdge for SugarCRM easily adapts to your business environment and how you individually work. It allows you to adjust applications on BlackBerry devices without a learning curve and hefty customization or consulting costs. Multi-lingual capabilities also make global communications easy.

### **4) User-Friendly and Configurable**

MobileEdge for SugarCRM allows you to adjust applications on BlackBerry devices without a learning curve and hefty customization or consulting costs. Multi-lingual capabilities also make global communications easy.

### **Prerequisites**

- Windows 2003 Server or greater
- Installation media
- SugarCRM API - You should have previously installed the SugarCRM web services API
- Full administrator rights to the target server

### **System Requirements**

- Single CPU Pentium or better processor
- 4 Gig RAM
- 100 Gig available disk space